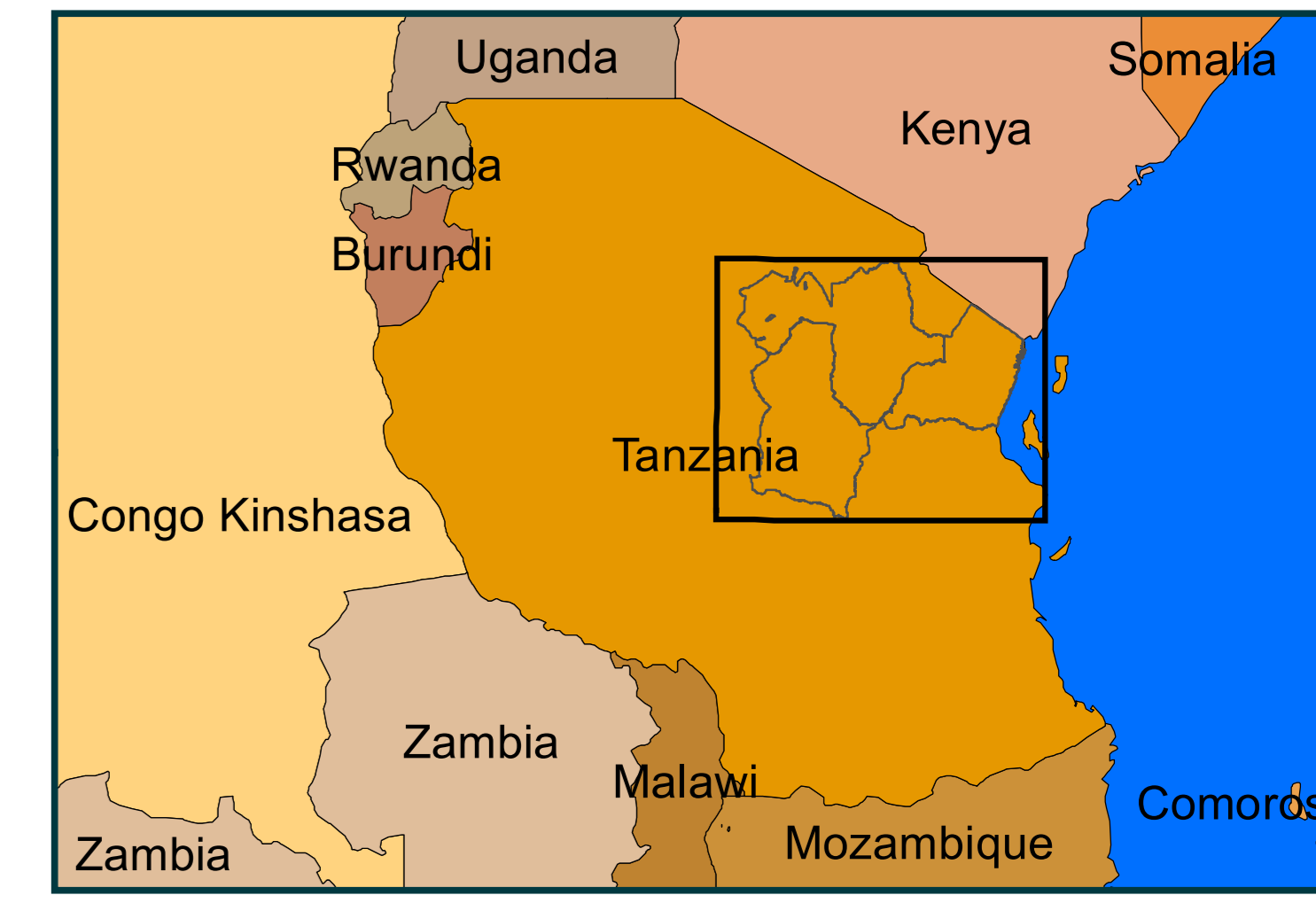
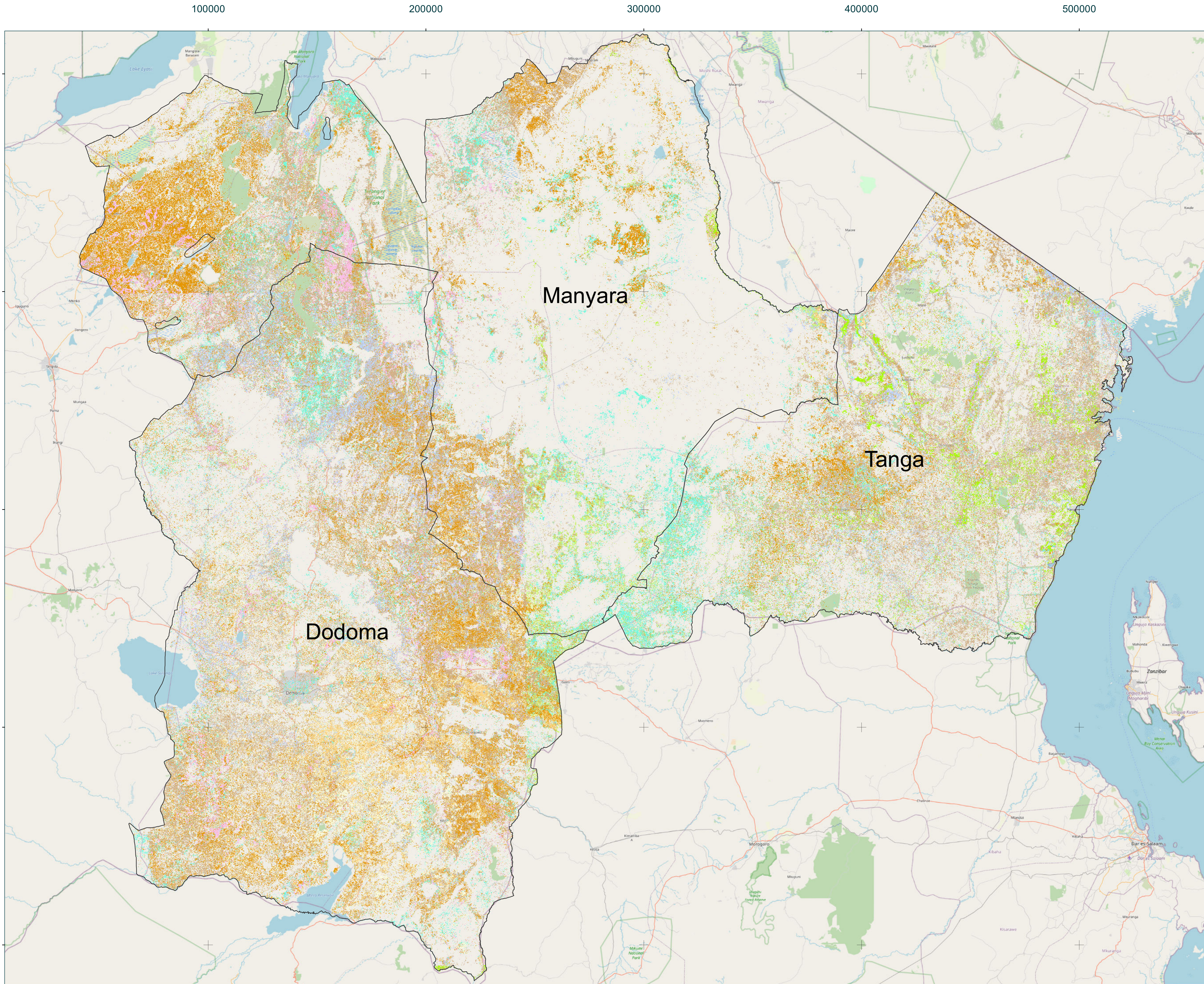


Copernicus4GEOGLAM - In-Season Crop Type Map - long rains season - Tanzania



This map shows the in-season Crop Type map for the 2021 long rains season in 3 districts in Tanzania (Dodoma, Manyara, Tanga), using a time-series of Sentinel-2 images between January 2021 and June 2021. The map is produced by TerraSphere and CLS under contract with Copernicus Global Land Service and the European Commission Joint Research Centre, in support to national and sub-national level agricultural monitoring systems in partner countries of the GEOGLAM initiative.

Projection: UTM 37 S
 Spheroid: WGS 84
 Datum: WGS 84
 Satellite data: Sentinel-2A&B
 Resolution: 10m
 Background: OpenStreetMap
 Data source: © ESA
 Created on: 11-06-2021
 Producer: TerraSphere
 (info@terrasphere.nl)

